

Faster Freight Cleaner Air 2006

# Need and Prospects for the Expansion of the I-710 Freeway

Councilwoman Bonnie Lowenthal

City of Long Beach

February 1, 2006

## The I-710 Freeway Today



## I-710 : The Need

- Combined, POLB and POLA are the busiest Port in the United States
- 14.2 million containers arrived at the twin Ports in 2005
- 15 % of all containers arriving in the U.S. travel on the I-710



## I-710 Actions to Date

- Alameda Corridor carries over 6,000 containers per day



## I-710 Actions to Date

- Northbound traffic on the I-710 has dropped 24% during daytime peak since PierPass began operating



## The I-710 Freeway Today



## I-710 is Vital to the Economy

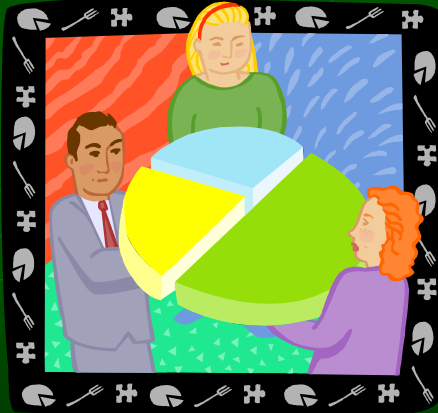
- I-710 has been designated a Corridor of National Significance
- California Goods Movement Action Plan
- Regional Transportation Plan
- Long Range Transportation Plan

## I-710 Challenges

- COST  
\$4 to \$5  
Billion



## Growing the Pie: Public-Private Partnerships



## I-710 Challenges



- ENVIRONMENT  
Health  
Air Quality  
Quality of Life

## Air Quality

- POLB: Green Port Policy
- POLA: Clean Air Program
- CARB: Emissions Reduction Plan
- AQMD: Clean Port Initiative Workplan

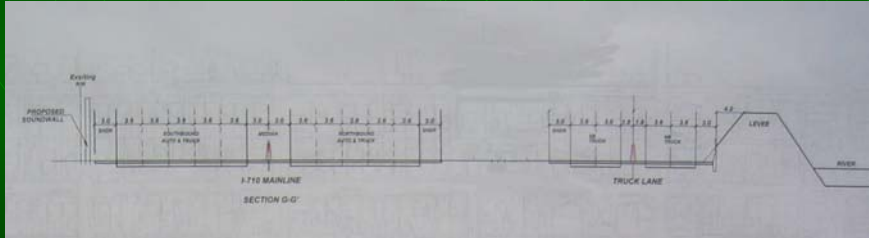
## I-710 Systems Approach

**City of Long Beach Locally Preferred Strategy**

- Port diesel emission improvements
- Truck diesel emission improvements
- Local street improvements
- Traffic signal enhancements
- Improved transit
- Fees to offset local impacts
- Enhanced Alameda Corridor

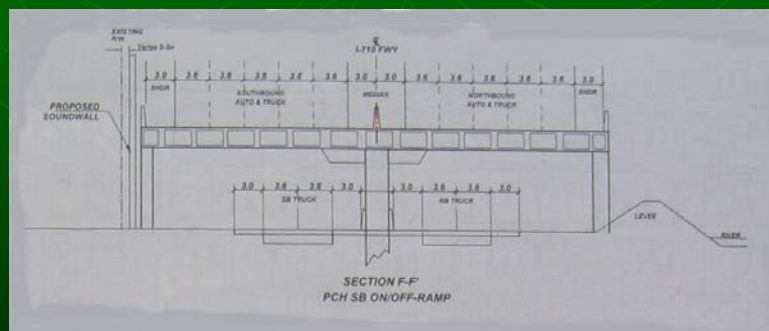
## I-710 Design Concepts

- Ten mixed-flow lanes, and four dedicated truck lanes

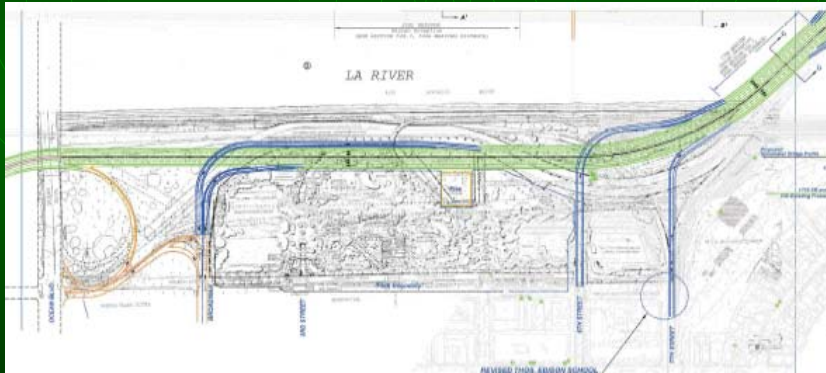


## I-710 Design Concepts

- Cars above trucks in key locations preserves homes



# I-710 Design Concept Incorporate Park Master Plan

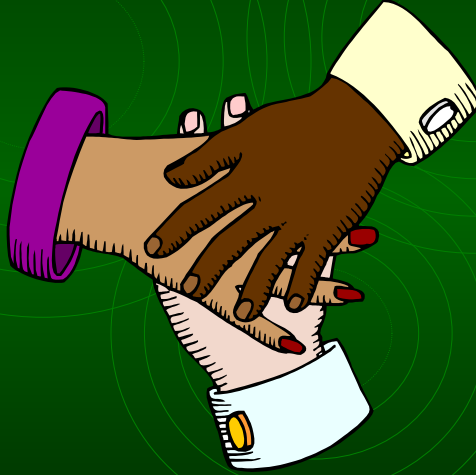


# I-710 Next Steps: Environmental Study





## I-710 Freeway Prospects



## Need and Prospects for the Expansion of the I-710

