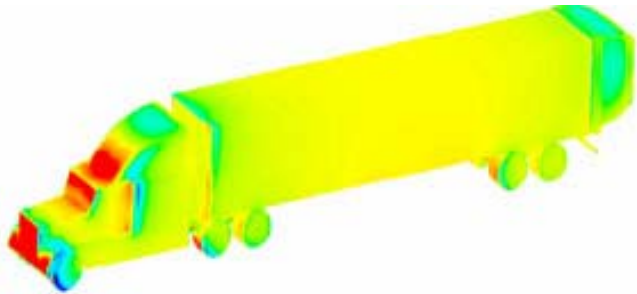


WF FREIGHT WING INC.™
Driving Fuel Efficiency Into Tomorrow
1-866-GO4-WING or www.freightwing.com



A Clear Need for Aerodynamics

- Fuel prices are at an all time high.
- 50% to 70% of a trucks fuel is used to overcome aerodynamic drag at highway speeds.
- Aerodynamic cabs have become standard equipment, but trailers are still an inefficient box shape that produces tremendous drag.
- Freight Wing Incorporated has developed the first complete and practical solution to trailer aerodynamics with the assistance of a U.S. Department of Energy grant.



Computational Tests Refined the Designs



Operational Tests Demonstrated Reliability



SAE Tests Proved the Fuel Savings

The Freight Wing Solution

- Freight Wing has developed fairings to improve aerodynamics in three key areas; the bottom, front and rear of the trailer.
- Combined, Freight Wing fairings achieved a **7% reduction** in fuel consumption in SAE/TMC J1321 standardized tests completed by the nations leading independent transportation research facility, the TRC.
- SAE/TMC standardized tests are trusted throughout the industry as the only accurate and impartial means of measuring improvements to fuel economy.



Freight Wing Gap Fairing™



Freight Wing Belly Fairing™

The Freight Wing Belly Fairing

- **4% SAE/TMC J1321 Proven Fuel Savings.**
- Easily mounted to any dry van or reefer by clamping onto existing I-beams.
- Angled flaps maximize aerodynamic performance and flex to provide over 20 inches of ground clearance.
- The modular aluminum side panels are durable, easily replaced if necessary and lightweight (the entire unit is under 100 lbs).



© 2004 Melissa Venné Photography

The Freight Wing System

- Boosts fuel efficiency improvement to **6%** by combining the Belly and Gap Fairings.
- The Gap Fairing prevents airflow from hitting the trailers front face and is compatible with nearly any dry van.
- The center of the trailers face remains open to allow easy access to the back of the cab and line hook ups.
- Designed specifically for use with modern aerodynamic sleeper and day cabs.



2004 Melissa Venné Photography



The Freight Wing Full Package

- Combines the Rear, Belly and Gap fairings to produce a **7%** fuel savings and the world's most efficient trailers.
- The Rear Fairing does not interfere with the operation of the truck by automatically folding flush against the sides of the trailer as the cargo doors are opened.
- Compatible with swing door dry vans, the full package makes ordinary trucks stand out on the road and is targeted toward branded fleets for advertising purposes and stylish owner/operators.



Fuel Savings

Return on investment in just over 100k miles at today's fuel prices

Fuel Savings per 100,000 miles

<u>Fuel Price</u>	<u>Belly Fairing</u>	<u>Belly and Gap Fairing</u>	<u>Belly, Gap, and Rear</u>
\$1.50	\$984	\$1,475	\$1,721
\$1.75	\$1,148	\$1,721	\$2,008
\$2.00	\$1,311	\$1,967	\$2,295
\$2.25	\$1,475	\$2,213	\$2,582
\$2.50	\$1,639	\$2,459	\$2,869

Additional Benefits

- Improved truck performance and handling.
- Reduced maintenance expenses through decreased engine power requirements and tire wear.
- Branded Fleets may improve their image and generate positive PR by promoting their environmental commitment through Freight Wing products.
- Freight Wing can help qualify fleets for the U.S. EPA's "Smartway Transport Partnership," a program designed to publicly recognize fuel and emissions saving companies.
- Reduces the splash/spray produced by trucks in rainy and snowy conditions.
- Truck Styling/Customization

Thank You

Feel Free to Contact Us At Any Time

Patrick Bigatel

or

Sean Graham

pat@freightwing.com

sean@freightwing.com

1-866-GO4-WING or www.freightwing.com